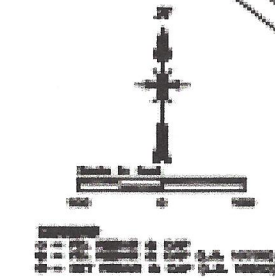
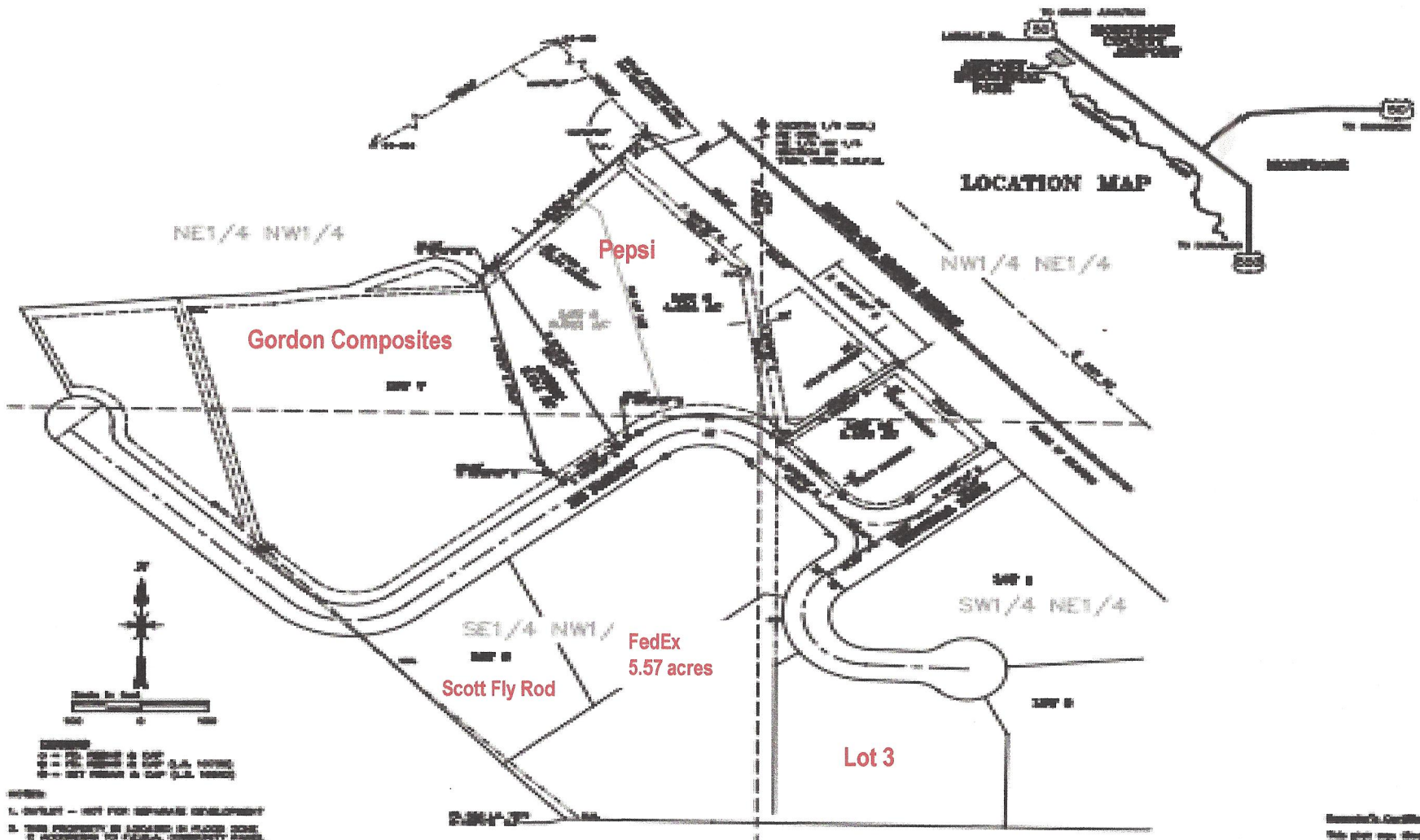


WOODPECKER SUBDIVISION

AMENDED PLAT OF LOTS 8 & 9 OF
AIRPORT INDUSTRIAL PARK

IN
SECTION 20, T. 49 N., R. 9 W., N.M.P.M. CITY OF MONTROSE, COLORADO



LEGEND
 ○ = 1/4 AC. LOT
 □ = 1/2 AC. LOT
 ▽ = 3/4 AC. LOT
 ▽ = 1 AC. LOT
 ▽ = 1 1/2 AC. LOT
 ▽ = 2 AC. LOT
 ▽ = 3 AC. LOT
 ▽ = 4 AC. LOT
 ▽ = 5 AC. LOT
 ▽ = 6 AC. LOT
 ▽ = 7 AC. LOT
 ▽ = 8 AC. LOT
 ▽ = 9 AC. LOT
 ▽ = 10 AC. LOT
 ▽ = 11 AC. LOT
 ▽ = 12 AC. LOT
 ▽ = 13 AC. LOT
 ▽ = 14 AC. LOT
 ▽ = 15 AC. LOT
 ▽ = 16 AC. LOT
 ▽ = 17 AC. LOT
 ▽ = 18 AC. LOT
 ▽ = 19 AC. LOT
 ▽ = 20 AC. LOT
 ▽ = 21 AC. LOT
 ▽ = 22 AC. LOT
 ▽ = 23 AC. LOT
 ▽ = 24 AC. LOT
 ▽ = 25 AC. LOT
 ▽ = 26 AC. LOT
 ▽ = 27 AC. LOT
 ▽ = 28 AC. LOT
 ▽ = 29 AC. LOT
 ▽ = 30 AC. LOT
 ▽ = 31 AC. LOT
 ▽ = 32 AC. LOT
 ▽ = 33 AC. LOT
 ▽ = 34 AC. LOT
 ▽ = 35 AC. LOT
 ▽ = 36 AC. LOT
 ▽ = 37 AC. LOT
 ▽ = 38 AC. LOT
 ▽ = 39 AC. LOT
 ▽ = 40 AC. LOT
 ▽ = 41 AC. LOT
 ▽ = 42 AC. LOT
 ▽ = 43 AC. LOT
 ▽ = 44 AC. LOT
 ▽ = 45 AC. LOT
 ▽ = 46 AC. LOT
 ▽ = 47 AC. LOT
 ▽ = 48 AC. LOT
 ▽ = 49 AC. LOT
 ▽ = 50 AC. LOT
 ▽ = 51 AC. LOT
 ▽ = 52 AC. LOT
 ▽ = 53 AC. LOT
 ▽ = 54 AC. LOT
 ▽ = 55 AC. LOT
 ▽ = 56 AC. LOT
 ▽ = 57 AC. LOT
 ▽ = 58 AC. LOT
 ▽ = 59 AC. LOT
 ▽ = 60 AC. LOT
 ▽ = 61 AC. LOT
 ▽ = 62 AC. LOT
 ▽ = 63 AC. LOT
 ▽ = 64 AC. LOT
 ▽ = 65 AC. LOT
 ▽ = 66 AC. LOT
 ▽ = 67 AC. LOT
 ▽ = 68 AC. LOT
 ▽ = 69 AC. LOT
 ▽ = 70 AC. LOT
 ▽ = 71 AC. LOT
 ▽ = 72 AC. LOT
 ▽ = 73 AC. LOT
 ▽ = 74 AC. LOT
 ▽ = 75 AC. LOT
 ▽ = 76 AC. LOT
 ▽ = 77 AC. LOT
 ▽ = 78 AC. LOT
 ▽ = 79 AC. LOT
 ▽ = 80 AC. LOT
 ▽ = 81 AC. LOT
 ▽ = 82 AC. LOT
 ▽ = 83 AC. LOT
 ▽ = 84 AC. LOT
 ▽ = 85 AC. LOT
 ▽ = 86 AC. LOT
 ▽ = 87 AC. LOT
 ▽ = 88 AC. LOT
 ▽ = 89 AC. LOT
 ▽ = 90 AC. LOT
 ▽ = 91 AC. LOT
 ▽ = 92 AC. LOT
 ▽ = 93 AC. LOT
 ▽ = 94 AC. LOT
 ▽ = 95 AC. LOT
 ▽ = 96 AC. LOT
 ▽ = 97 AC. LOT
 ▽ = 98 AC. LOT
 ▽ = 99 AC. LOT
 ▽ = 100 AC. LOT

Lot No.	Acres	Owner	Notes
1	0.25		
2	0.25		
3	0.25		
4	0.25		
5	0.25		
6	0.25		
7	0.25		
8	0.25		
9	0.25		
10	0.25		
11	0.25		
12	0.25		
13	0.25		
14	0.25		
15	0.25		
16	0.25		
17	0.25		
18	0.25		
19	0.25		
20	0.25		
21	0.25		
22	0.25		
23	0.25		
24	0.25		
25	0.25		
26	0.25		
27	0.25		
28	0.25		
29	0.25		
30	0.25		
31	0.25		
32	0.25		
33	0.25		
34	0.25		
35	0.25		
36	0.25		
37	0.25		
38	0.25		
39	0.25		
40	0.25		
41	0.25		
42	0.25		
43	0.25		
44	0.25		
45	0.25		
46	0.25		
47	0.25		
48	0.25		
49	0.25		
50	0.25		
51	0.25		
52	0.25		
53	0.25		
54	0.25		
55	0.25		
56	0.25		
57	0.25		
58	0.25		
59	0.25		
60	0.25		
61	0.25		
62	0.25		
63	0.25		
64	0.25		
65	0.25		
66	0.25		
67	0.25		
68	0.25		
69	0.25		
70	0.25		
71	0.25		
72	0.25		
73	0.25		
74	0.25		
75	0.25		
76	0.25		
77	0.25		
78	0.25		
79	0.25		
80	0.25		
81	0.25		
82	0.25		
83	0.25		
84	0.25		
85	0.25		
86	0.25		
87	0.25		
88	0.25		
89	0.25		
90	0.25		
91	0.25		
92	0.25		
93	0.25		
94	0.25		
95	0.25		
96	0.25		
97	0.25		
98	0.25		
99	0.25		
100	0.25		

Surveyor's Certificate
 This plan was filed for
 recording on _____
 at _____
 County _____ State of _____

 Surveyor