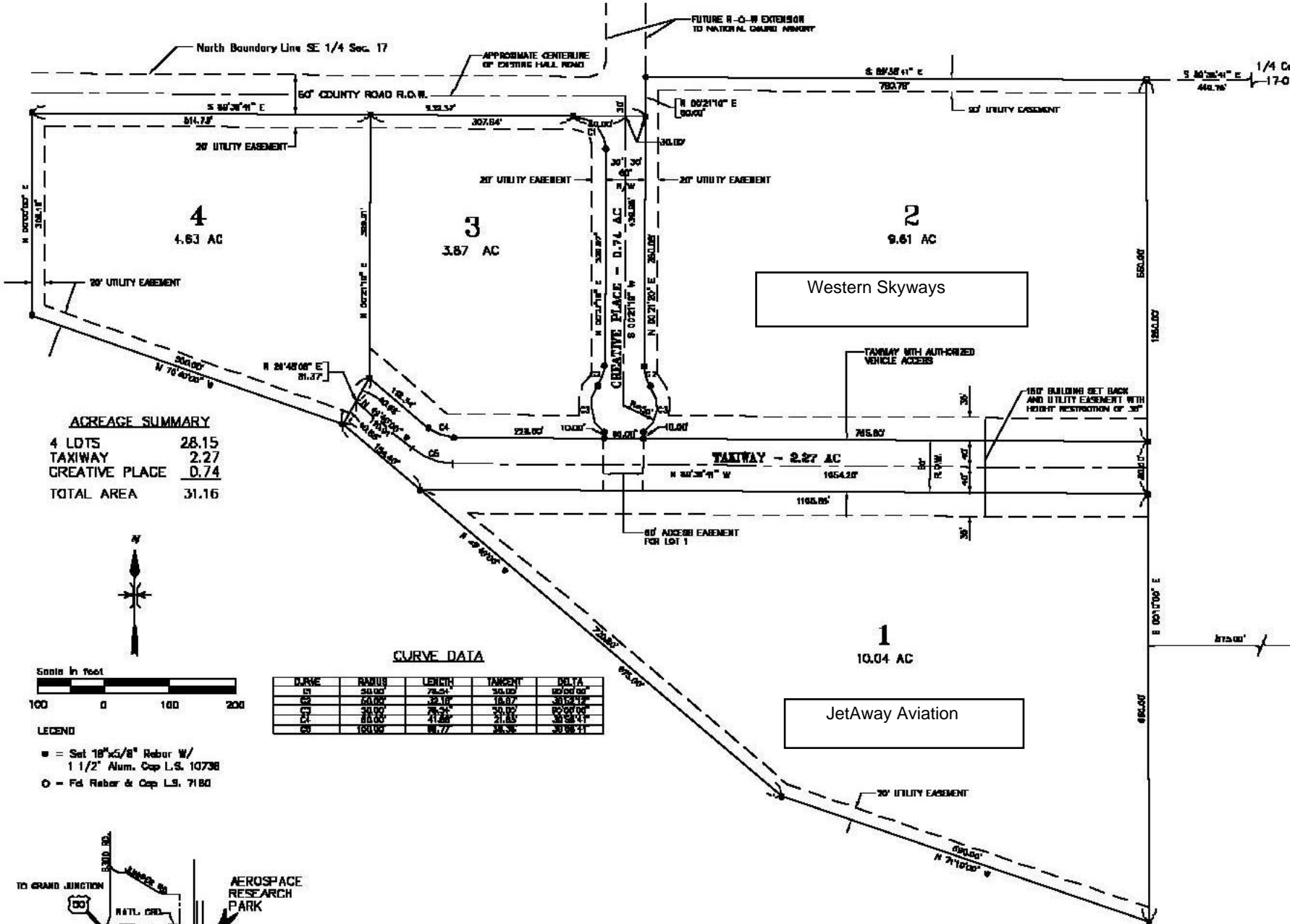


# AEROSPACE RESEARCH PARK

N1/2 SE1/4 SECTION 17, T49N, R9W, N.M.P.M.  
CITY OF MONTROSE, COLORADO



### ACREAGE SUMMARY

4 LOTS	28.15
TAXIWAY	2.27
CREATIVE PLACE	0.74
TOTAL AREA	31.16

### CURVE DATA

CURVE	RADIUS	LENGTH	TANGENT	DELTA
B1	50.00'	78.54'	35.12'	120.00°
B2	50.00'	39.18'	18.87'	30.00°
C1	50.00'	78.54'	35.12'	120.00°
C2	80.00'	41.88'	21.85'	30.00°
D1	100.00'	61.77'	32.36'	30.00°

Scales in feet



### LEGEND

- = Set 18"x6"/8" Rebar W/  
1 1/2" Alum. Cap L.S. 10738
- = Fd Rebar & Cap L.S. 7180

